



HM Government

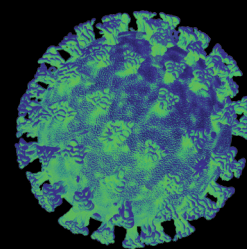
**NHS**

# Coronavirus

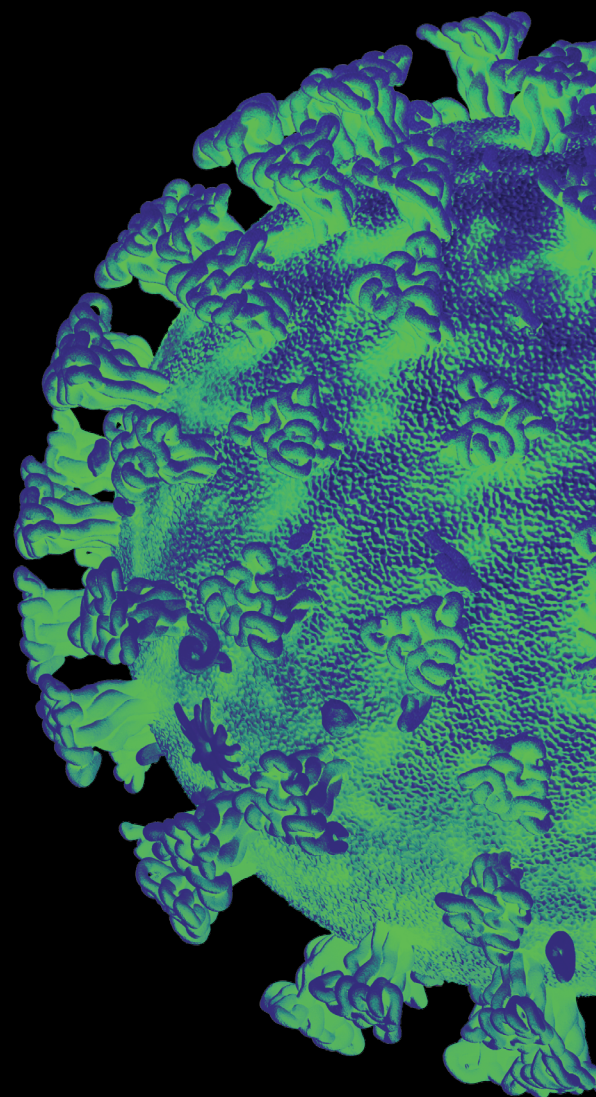
## Isolate your household

## Stay at home

If you or anyone in your household has a high temperature or a new and continuous cough – even if it's mild



- ✔ **Everyone in your household must stay at home** for 14 days and keep away from others.
- ✔ **Go to NHS.UK** to check your symptoms and follow the specialist medical advice. Only call NHS 111 if you can't get online or your symptoms worsen.
- ✔ **Protect** older people and those with existing health conditions by avoiding contact.
- ✘ Please **DO NOT** enter this building



**CORONAVIRUS**

**PROTECT  
YOURSELF  
OTHERS &  
THE NHS**