

USERGUIDE

GET TO KNOW YOUR
AEROSPHERE INHALER



TRIXEO
AEROSPHERE®

(formoterol fumarate, glycopyrronium,
and budesonide) Inhalation Aerosol

If you get any side effects, including those not listed in the package leaflet, talk to your doctor, pharmacist or nurse. You can report side effects directly via the Yellow Card Scheme at: <https://yellowcard.mhra.gov.uk>, or search for MHRA Yellow Card in the Google Play or Apple App Store. Side effects can also be reported to AstraZeneca by visiting <https://contactazmedical.astrazeneca.com>, emailing medical.informationuk@astrazeneca.com or by calling 0800 783 0033.



TRIXEO INHALER

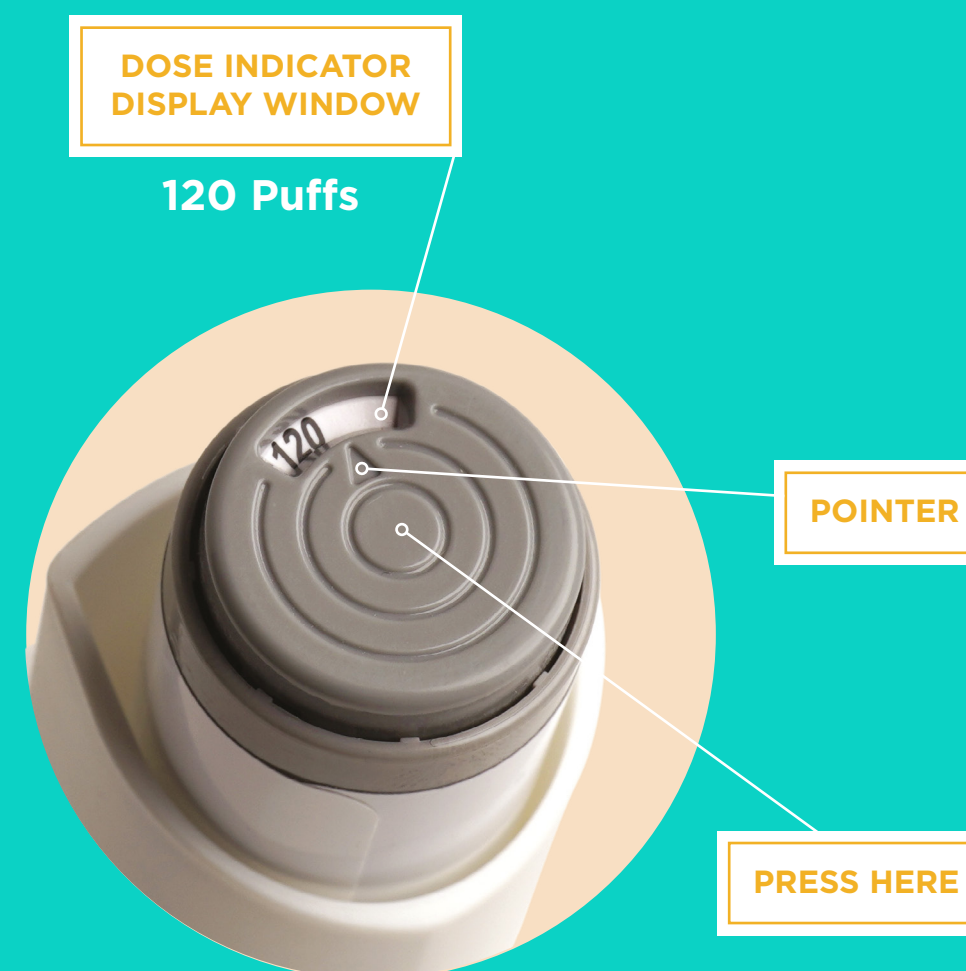




PREPARE FOR USE

Before you use TRI-XEO AEROSPHERE (formoterol fumarate/ glycopyrronium/ budesonide) for the first time, make sure the pointer on the dose indicator is pointing to the right of the “120” inhalation mark in the dose indicator display window.

The dose indicator display window counts down in 10s, refill your prescription when there are 20 puffs left.



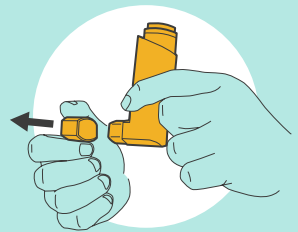
Remove your inhaler from the foil pouch and throw away the pouch and drying packet.

Please refer to the patient information leaflet that came with your inhaler for detailed information about your medicine.

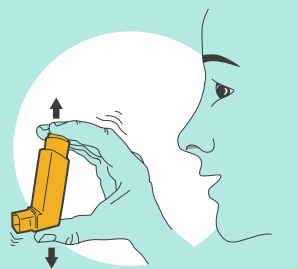


PRIME FOR USE

Once you are ready to use your inhaler for the first time, you must prime it.



Remove the cap from the mouthpiece. Check inside the mouthpiece for objects before use.



Hold the inhaler in the upright position away from your face **and shake well.**



Press down firmly on the center of the dose indicator until the canister stops moving in the actuator, to release a puff of medicine from the mouthpiece. You may hear a soft click from the dose indicator as it counts down during use.

Repeat the priming steps 3 more times. Shake the inhaler well before each priming puff.

After priming 4 times, **the dose indicator should be pointing to the right of “120”** and your inhaler is now ready to use.

Replace the cap until you are ready to use your inhaler.

If you haven't used your inhaler for more than 7 days, or if you dropped it by accident, make sure you re-prime it before using it.

Take your inhaler:

2 puffs in the morning.

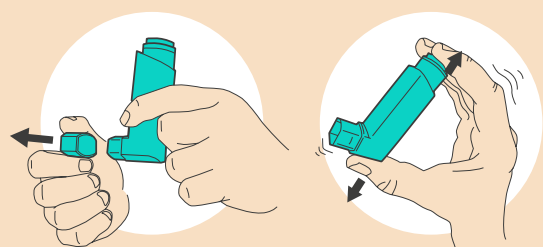


2 puffs in the evening.

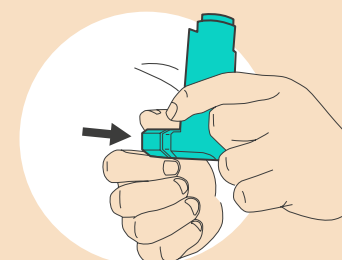




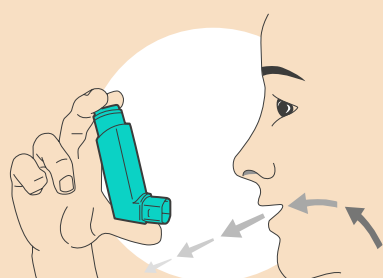
USE YOUR INHALER



Remove the cap from the mouthpiece. Shake the inhaler well before each use.



Replace the cap over the mouthpiece right away after use. Rinse your mouth with water to remove any excess medicine. **Do not swallow.**

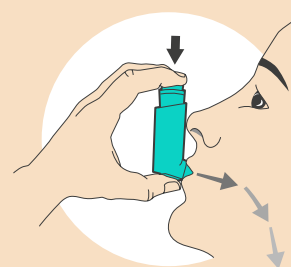


Hold the inhaler with the mouthpiece pointing toward you and breathe out as fully as you can through your mouth. Close your lips around the mouthpiece and tilt your head back, keeping your tongue below the mouthpiece.

Using the Aerosphere inhaler with a spacer

Your healthcare professional may prescribe a spacer with your inhaler to give you more time between releasing your medicine from the canister and inhaling it.

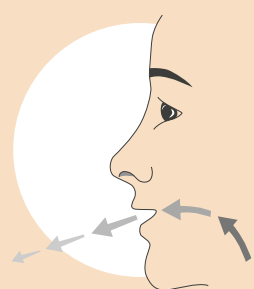
Make sure you read through the instructions that come with your spacer.



While breathing in deeply and slowly, press down on the center of the dose indicator until the canister stops moving in the actuator and a puff of medicine has been released. Then stop pressing the dose indicator.

When you are ready to take TRIXEO, shake the inhaler well and immediately attach the spacer to the mouthpiece of the inhaler.

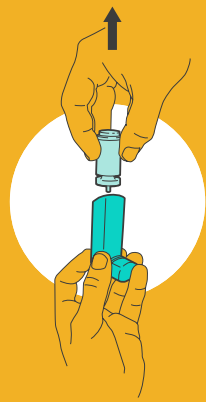
Follow the instructions to take TRIXEO as you normally would.



When you've finished breathing in, remove the mouthpiece from your mouth. **Hold your breath as long as you comfortably can, up to 10 seconds.** Breathe out gently. **Repeat these steps to take your second puff.**

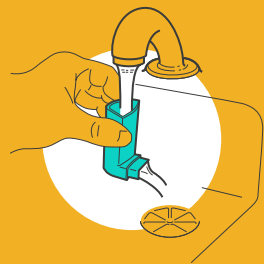


CLEAN & STORE



Clean the inhaler once each week after an evening dose has been taken.. It is very important to keep your inhaler clean so that medicine will not build-up and block the spray through the mouthpiece.

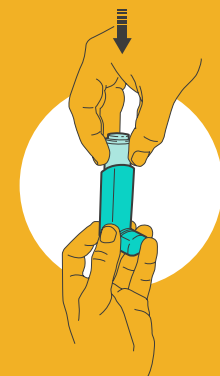
Take the canister out of the actuator. Do not clean the canister or let it get wet.



Take the cap off the mouthpiece. **Hold the actuator under the tap and run warm water through it for about 30 seconds.** Turn the actuator upside down and run warm water through it again for about 30 seconds.



Shake off as much water from the actuator as you can. Look into the actuator and the mouthpiece to make sure any medicine build-up has been completely washed away. Let the actuator air-dry completely, such as overnight. **Do not** put the canister back into the actuator if it is still wet.



When the actuator is dry, gently press the canister down in the actuator. Make sure you're not pressing down too hard on the canister. You want to make sure it's in but don't want to cause a puff of medicine to be released. **Re-prime your inhaler after each cleaning.**

Make sure you store your inhaler in a dry place.